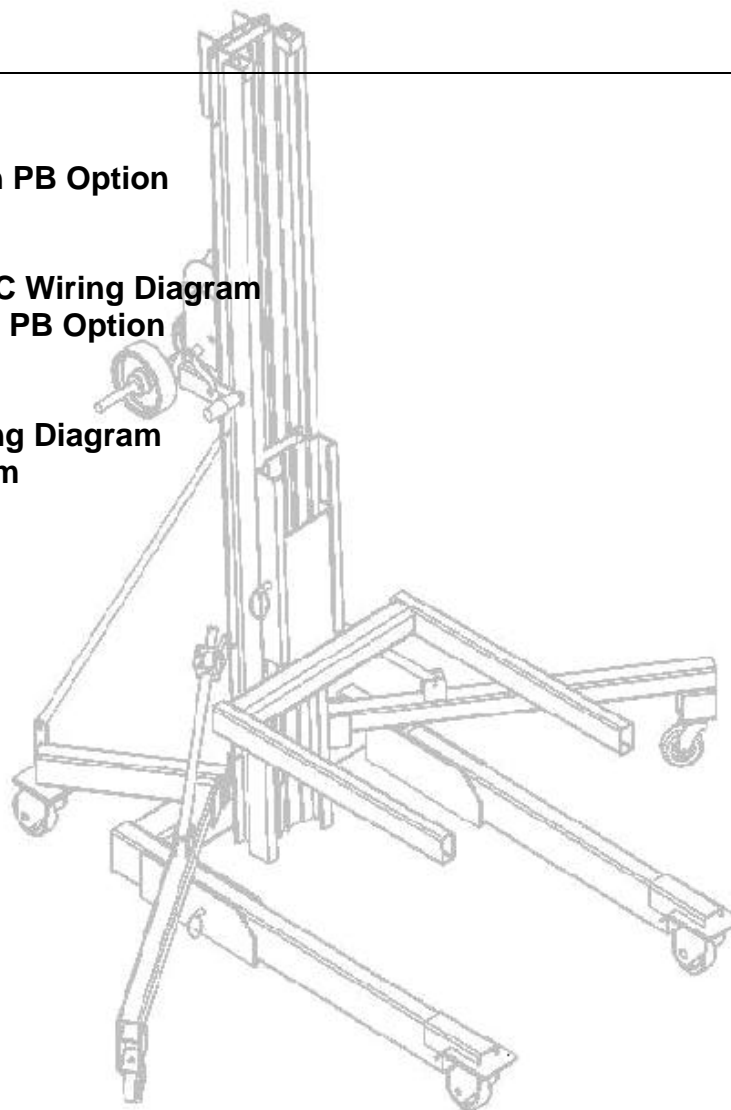


# A8 DPL

Page: Model:

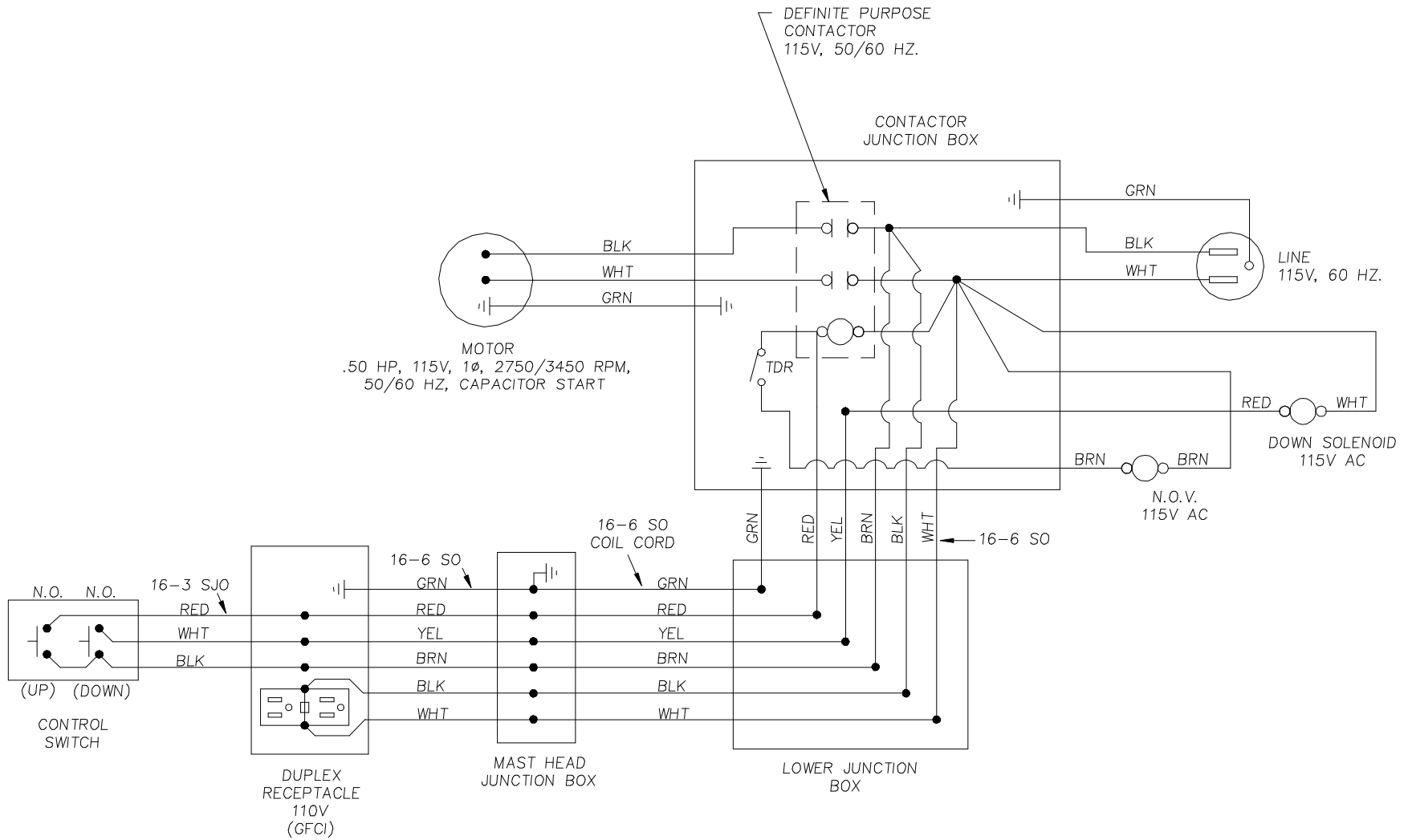
Serial Number:

- A8-01 AC Wiring Diagram, with PB Option
- A8-02 AC Wiring Diagram
- A8-03 UK AC Wiring Diagram
- A8-04 NOVON France Dutch AC Wiring Diagram
- A8-05 DC Wiring Diagram With PB Option
- A8-06 TUV DC Wiring Diagram
- A8-07 UK DC Wiring Diagram
- A8-08 NOVON France DC Wiring Diagram
- A8-09 SUVA DC Wiring Diagram
- A8-10 Hydraulic Schematic
- A8-11 92 Hydraulic Schematic

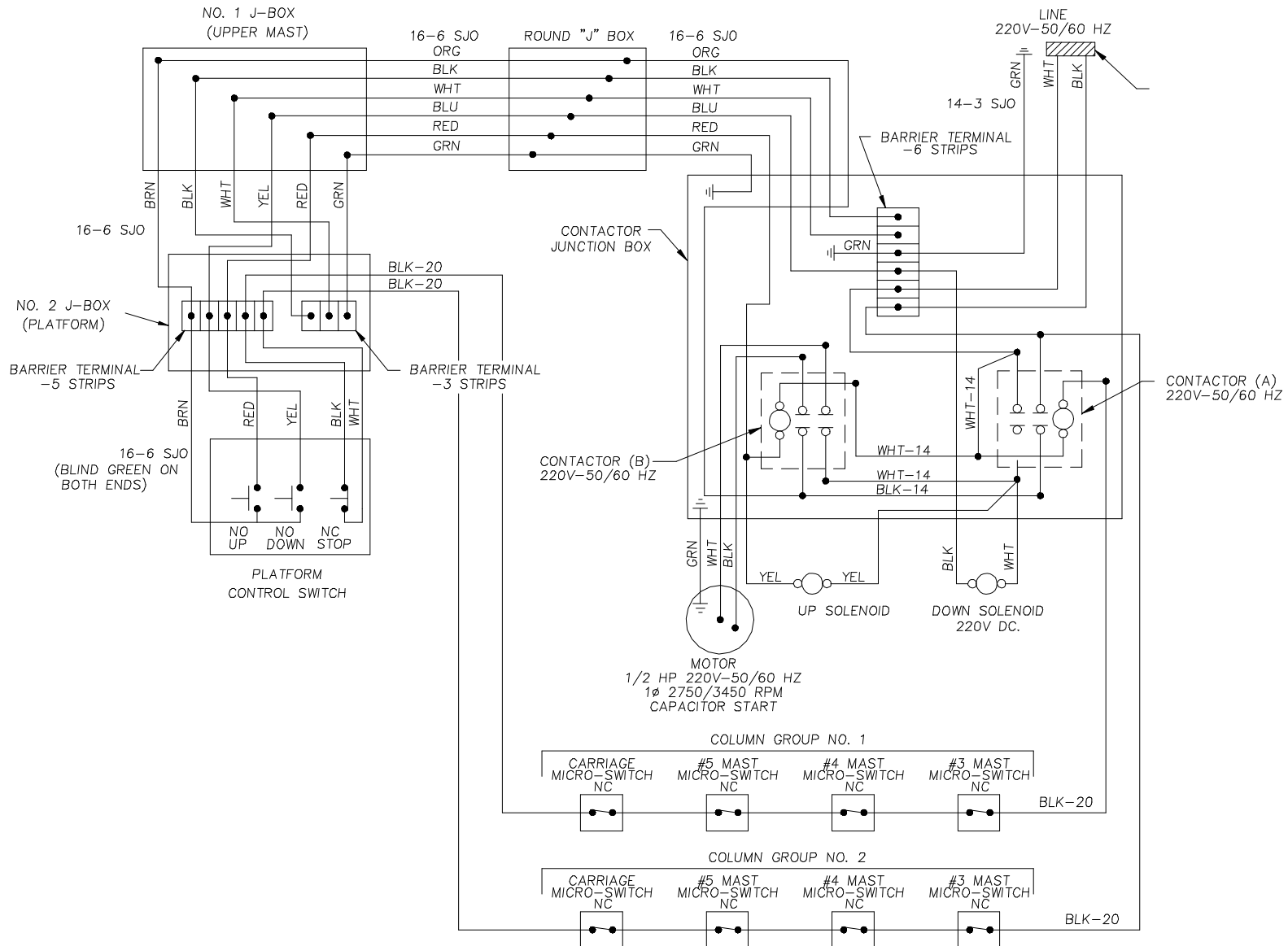


NOTE: FOR 115V, 50/60 HZ APPLICATIONS.

DPL  
AC WIRING DIAGRAM, W/PB OPTION

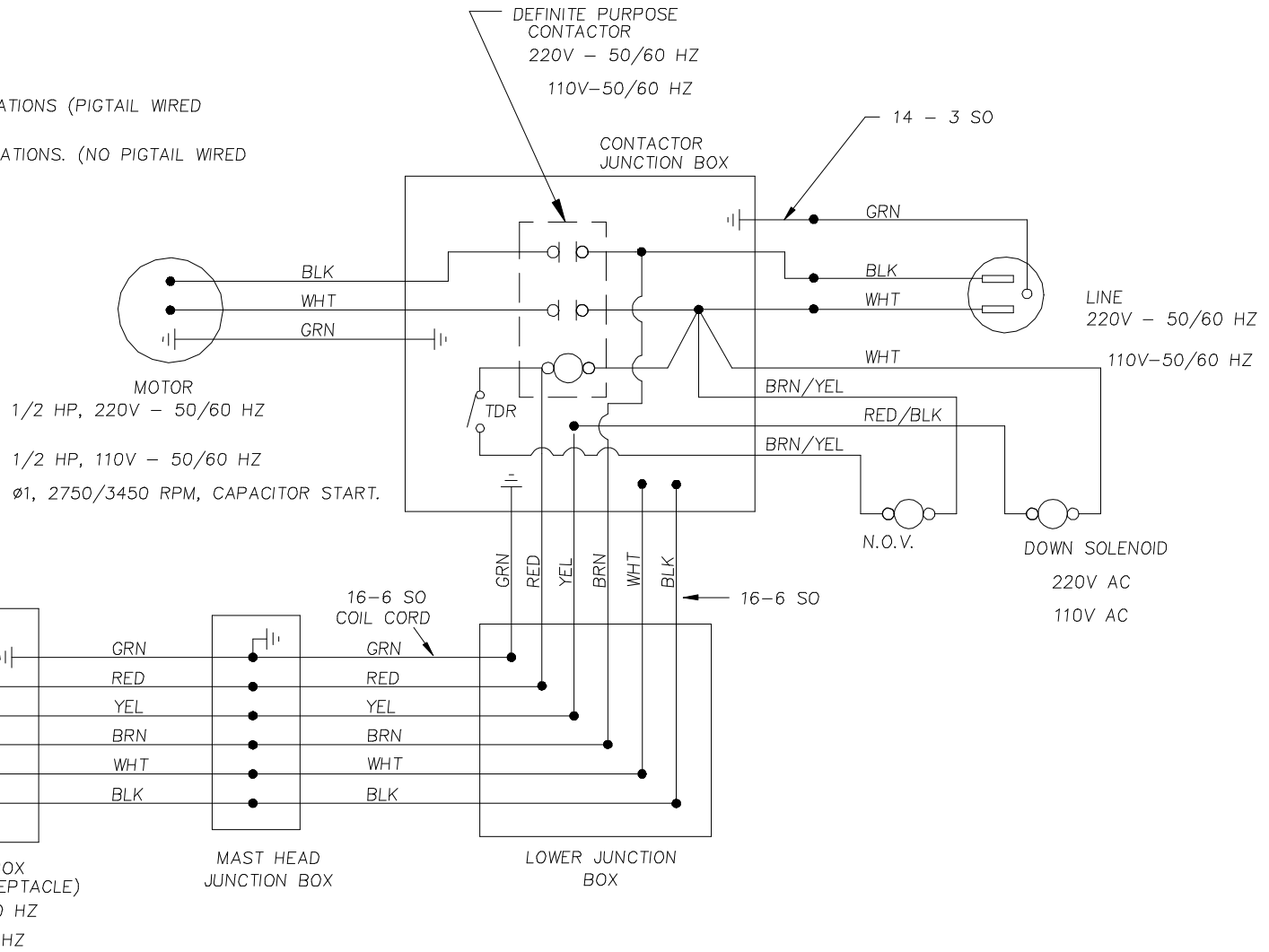


# DPL-TUV AC WIRING DIAGRAM

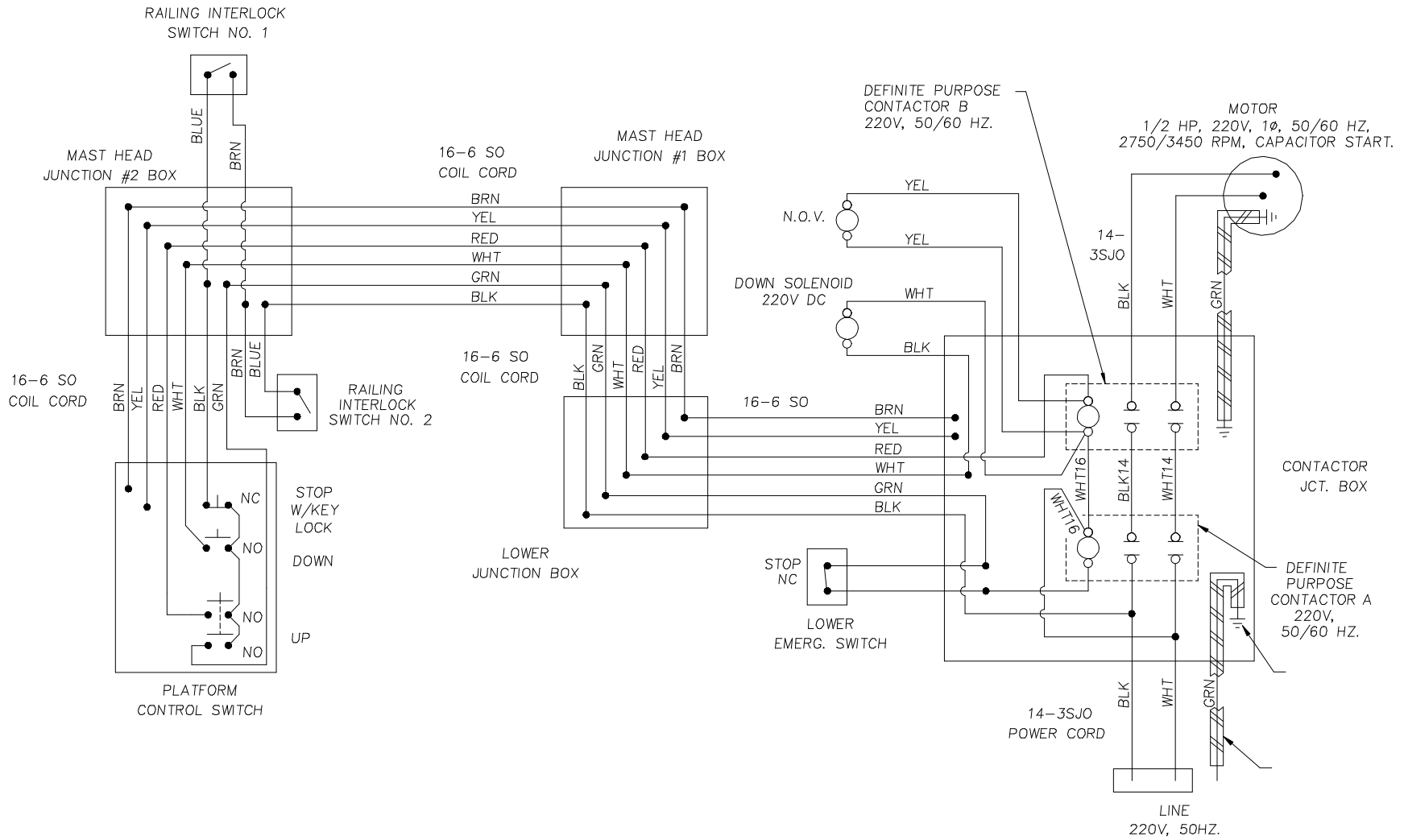


# DPL-UK AC WIRING DIAGRAM

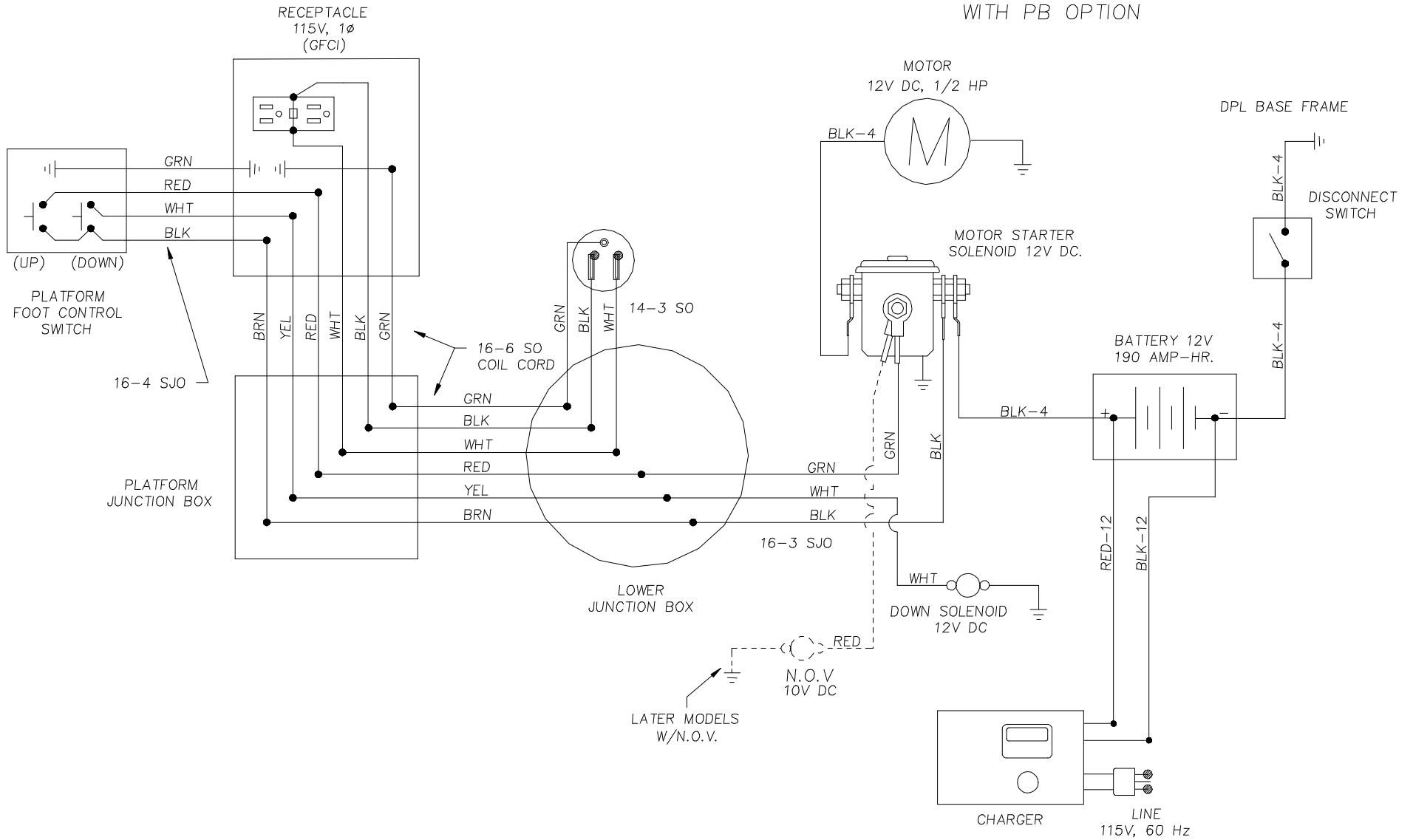
FOR 110V - 50 HZ APPLICATIONS (PIGTAIL WIRED AT GENIE)  
 FOR 220V - 50 HZ APPLICATIONS. (NO PIGTAIL WIRED AT GENIE)



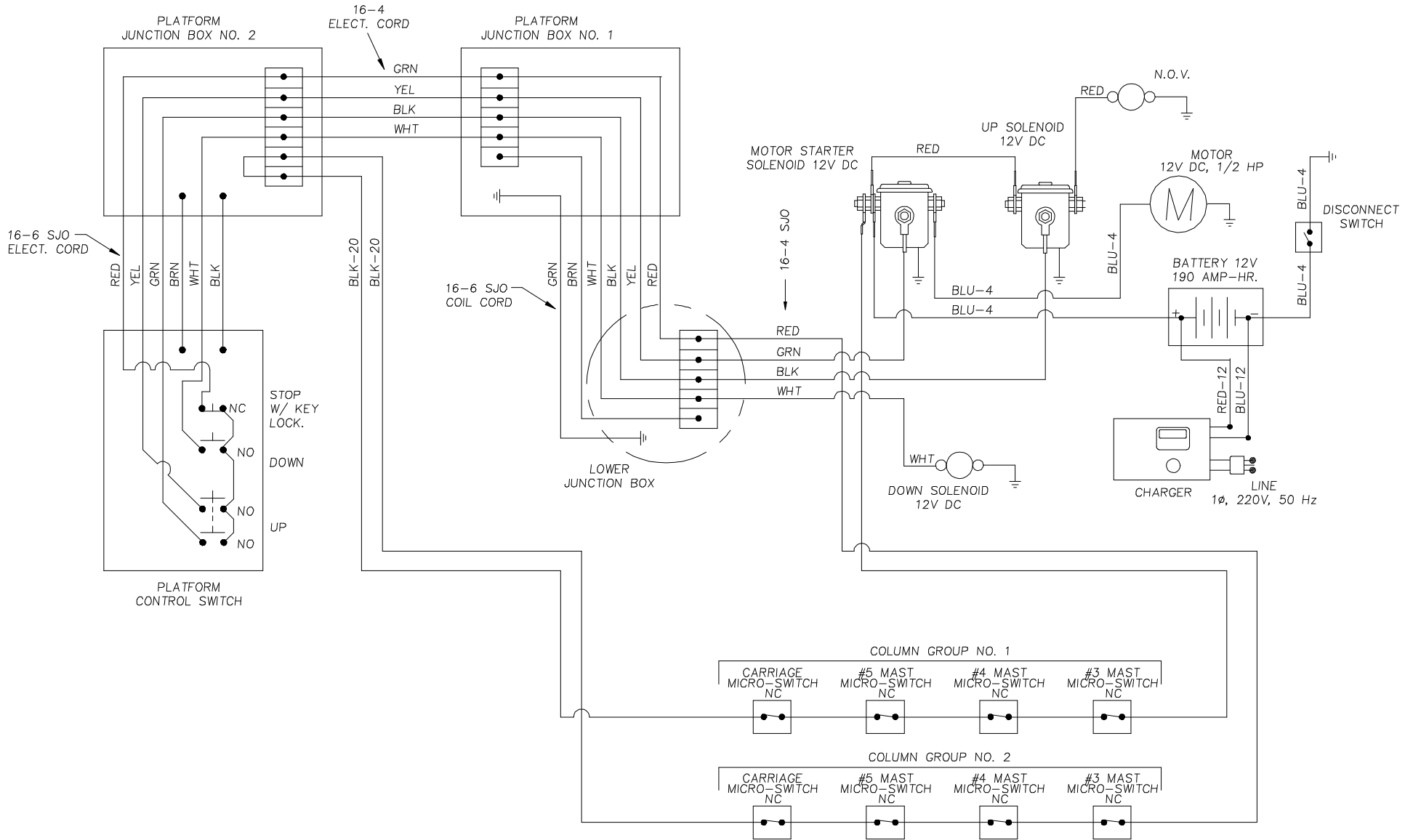
# DPL-NOVON FRENCH DUTCH AC WIRING DIAGRAM



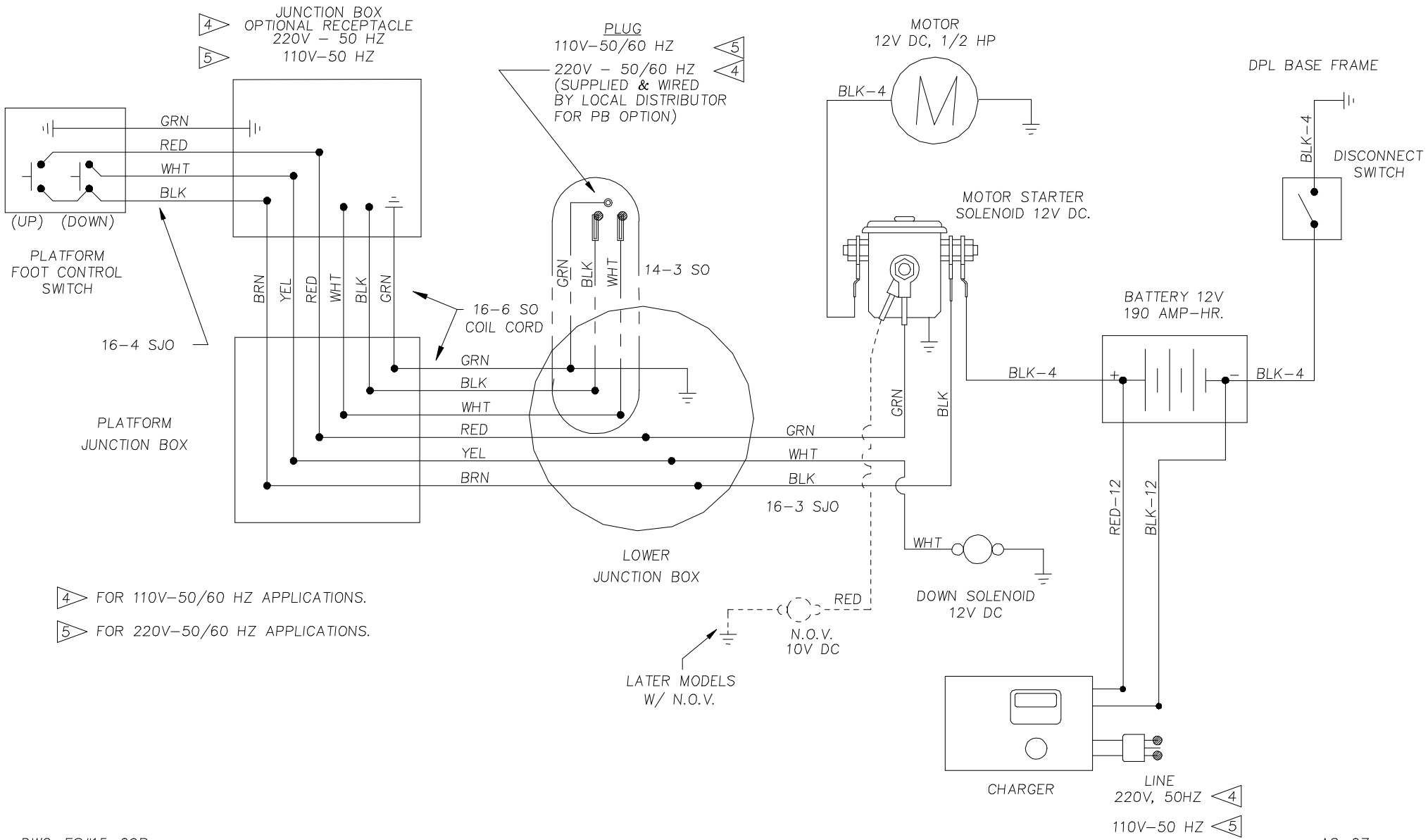
# DPL DC WIRING DIAGRAM WITH PB OPTION



# DPL-TUV DC WIRING DIAGRAM



DPL-UK  
DC WIRING DIAGRAM



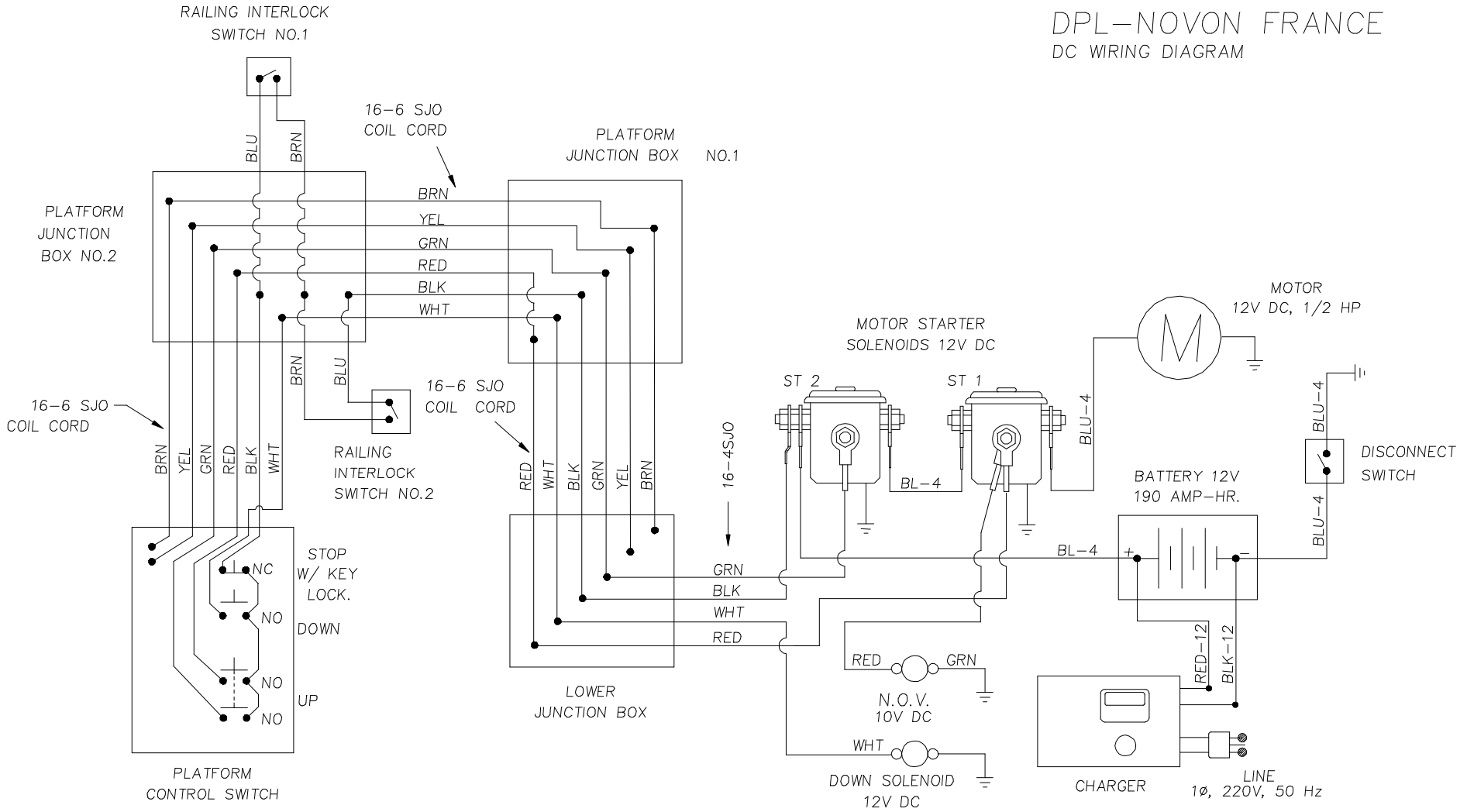
4 FOR 110V-50/60 HZ APPLICATIONS.  
5 FOR 220V-50/60 HZ APPLICATIONS.

LATER MODELS  
W/ N.O.V.

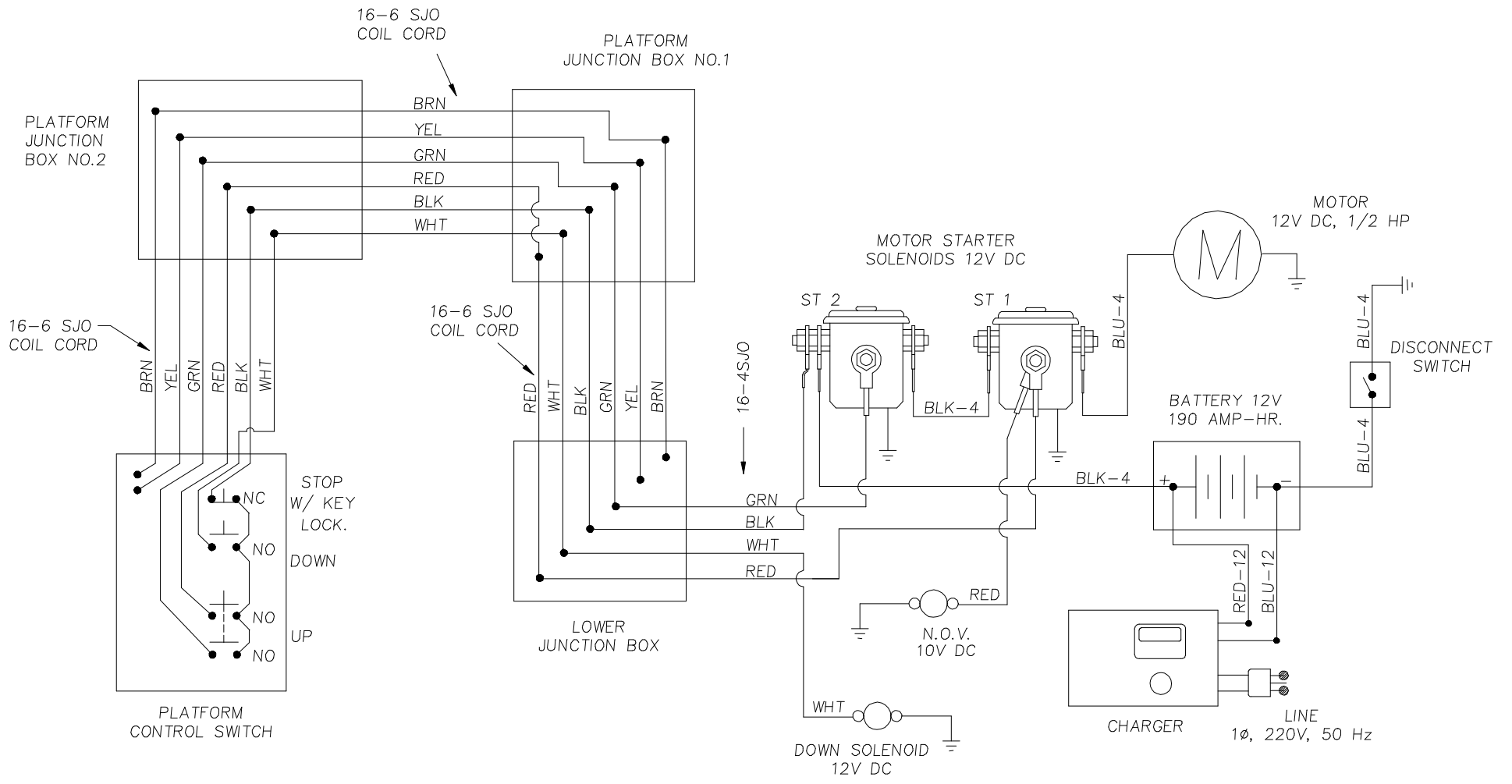


# DPL-NOVON FRANCE

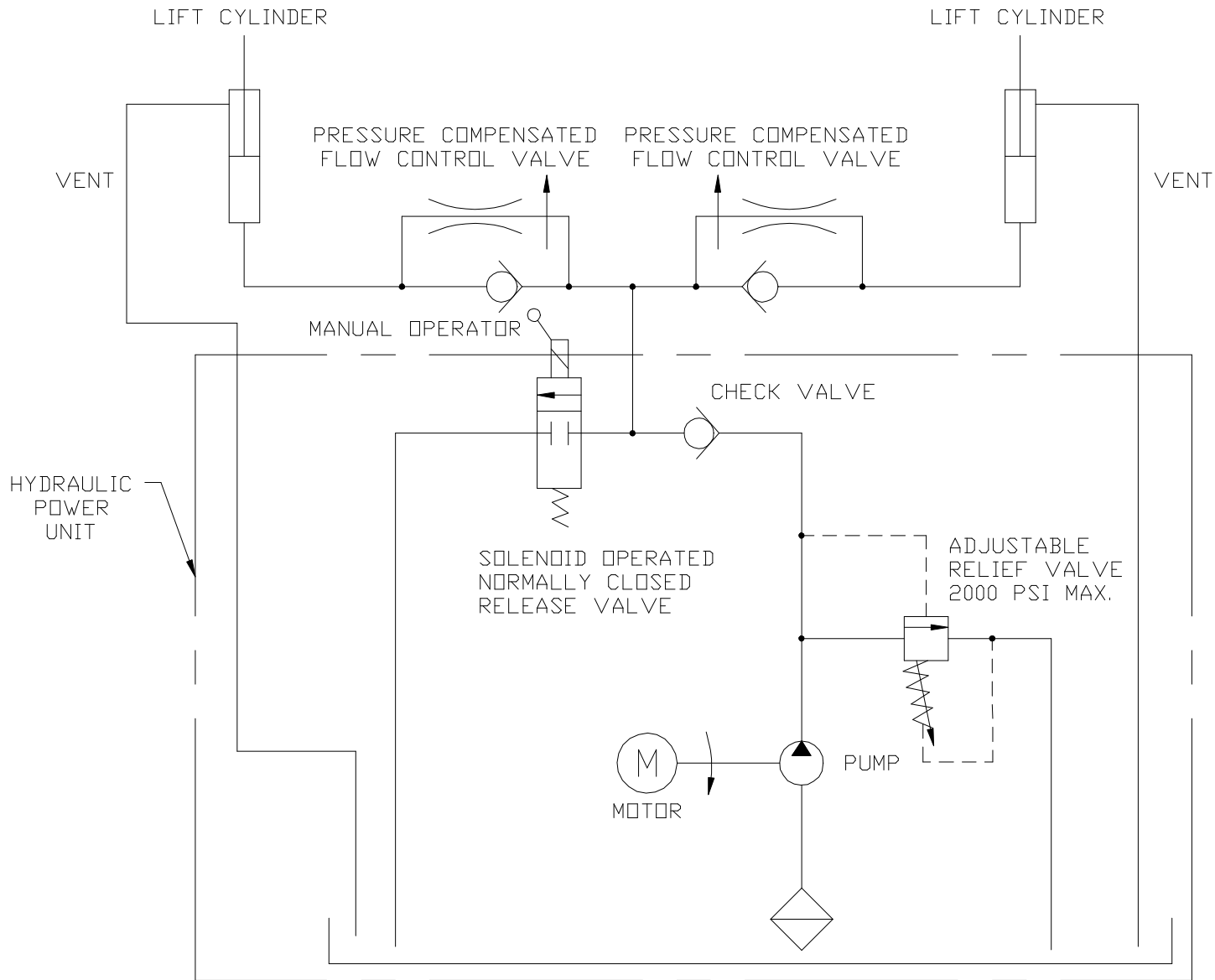
## DC WIRING DIAGRAM



# DPL-SUVA DC WIRING DIAGRAM



DPL  
HYDRAULIC SCHEM



DPL92  
HYDRAULIC SCHEM

